

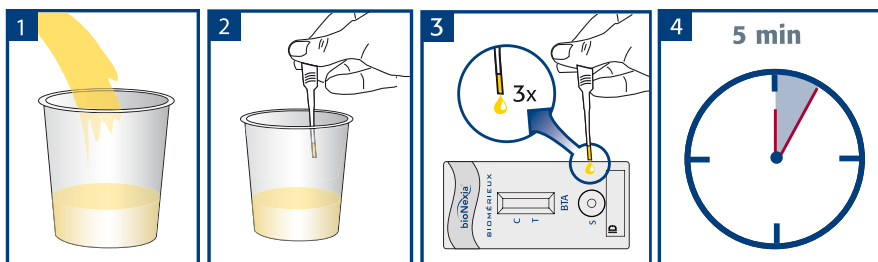


bioNexia® BTA
is a non-invasive Rapid Test
**for the qualitative
detection of Bladder
Tumor-associated Antigen**
in human urine specimens

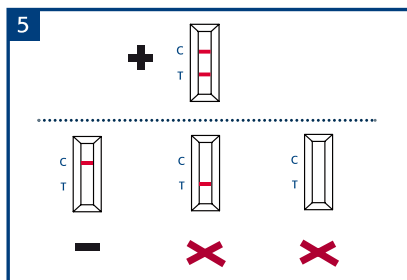
bioNexia™

Get **MORE** from your Rapid Test

TEST PROCEDURE



TEST INTERPRETATION



Why choose bioNexia® BTA ?

- Aid for screening high-risk populations and monitoring of patients with bladder cancer
- Non-invasive method (no patient discomfort)
- Easy-to-use
- All-inclusive kit



Clinical Background

- Bladder Tumor-associated Antigen (BTA) is a specific protein released during the reproduction of bladder tumor cells.
- The presence of BTA in urine is often associated with an increased risk of bladder cancer, or tumor recurrence, indicating that further investigations may be required.
- Studies have shown that the combined use of BTA rapid tests with urine cytology significantly increases sensitivity for the detection of early-stage bladder cancer.¹

1. Bassi P. *et al.* Urologia Pratica, 2, 63-67, 1998

Technical data

- Reference: 410591 (10 Tests)
- Cut-off: 22.4 IU/mL
- Shelf-life: 22 months
- Storage temperature: +2°C to +30°C
- Content of the kit:
 - 10 test cassettes
 - 10 disposable pipettes
 - 1 instructions for use
 - 1 quick guide

Dimensions of the kit

- Length: 130 mm
- Width: 105 mm
- Height: 80 mm
- Weight: 205 g

Want **MORE** from bioNexia ?

Explore More Products, More Features
and More Services at
www.biomerieux.com/bionexia



bioMérieux S.A.
69280 Marcy l'Etoile
France
Tel. : +33 (0)4 78 87 20 00
Fax : +33 (0)4 78 87 20 90

www.biomerieux.com/bionexia