

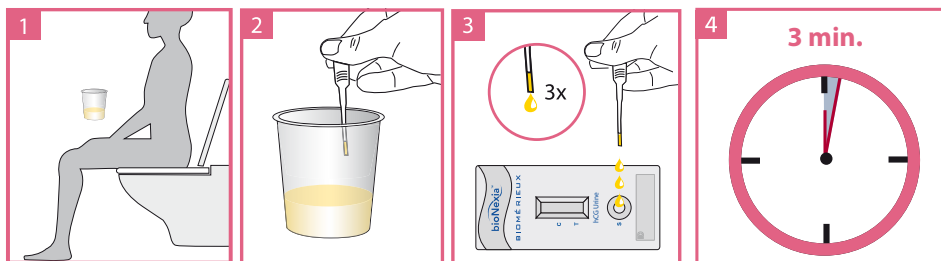


bioNexia[®] hCG Urine
is a rapid one-step chromatographic test
for the qualitative detection
of human chorionic
gonadotropin (hCG)
in urine

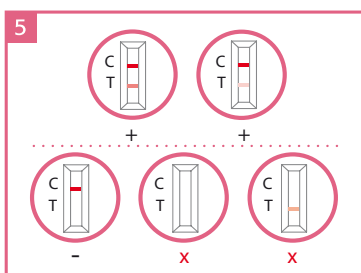
bioNexia[™]

Get **MORE** from your Rapid Test

TEST PROCEDURE



TEST INTERPRETATION



Why choose bioNexia[®] hCG Urine?

- Adapted sensitivity to aid in the early detection of pregnancy: 25 mIU/ml on urine
- Proven specificity > 99%
- Results available in just 3 minutes
- Easy-to-use, all-inclusive kit



Clinical Background

- Human chorionic gonadotropin (hCG) is a glycoprotein hormone produced by the developing placenta during pregnancy.
- In normal pregnancy, hCG levels can be detected in both urine and serum soon after conception.^{1,2,3,4} hCG levels continue to rise very rapidly, frequently exceeding 100 mIU/mL by the first missed menstrual period^{2,3,4} and peaking in the 100,000-200,000 mIU/mL range about 10-12 weeks into pregnancy. hCG levels then decline rapidly during the second trimester and remain low for the rest of the pregnancy.³
- The appearance of hCG in both urine and serum soon after conception, and its subsequent rapid rise in concentration during early gestational growth, make it an **excellent marker for the early detection of pregnancy.**

1. Batzer FR. Hormonal evaluation of early pregnancy, *Fertil. Steril.* 1980; 34(1):1-13
2. Catt KJ, ML Dufau, JL Vaitukaitis Appearance of hCG in pregnancy plasma following the initiation of implantation of the blastocyte, *J. Clin. Endocrinol. Metab.* 1975; 40(3):537-540
3. Braunstein GD, J Rasor, H. Danzer, D Adler, ME Wade Serum human chorionic gonadotropin levels throughout normal pregnancy, *Am. J. Obstet. Gynecol.* 1976; 126(6):678-681
4. Lenton EA, LM Neal, R Sulaiman Plasma concentration of human chorionic gonadotropin from the time of implantation until the second week of pregnancy, *Fertil. Steril.* 1982; 37(6):773-778

Technical data

- Reference: 412551 (30 tests)
- Cut-off: 25 mIU/ml
- Shelf-life: 24 months
- Storage temperature: +2°C to +30°C
- Content of the kit:
 - 30 test cassettes
 - 30 disposable pipettes
 - 1 package insert
 - 1 user quick guide

Dimensions of the kit

- Length: 210 mm
- Width: 130 mm
- Height: 83 mm
- Weight: 427 g

Want **MORE** from bioNexia ?

Explore More Products, More Features
and More Services at
www.biomerieux.com/bionexia



bioMérieux S.A.
69280 Marcy l'Etoile
France
Tel. : +33 (0)4 78 87 20 00
Fax : +33 (0)4 78 87 20 90

www.biomerieux.com/bionexia

